

MOTOTRBO  
R2



# MOTOTRBO R2

## CUSTOMER PRESENTATION



**MOTOROLA** SOLUTIONS

LOUDNESS UP 101  
PHONS

LARGE, CURVED PTT  
BUTTON

2 PROGRAMMABLE  
BUTTONS

SELECTABLE  
AUDIO PROFILES

SLEEK & RUGGED

SINC NOISE  
SUPPRESSION



PROTECTIVE  
DUST COVER

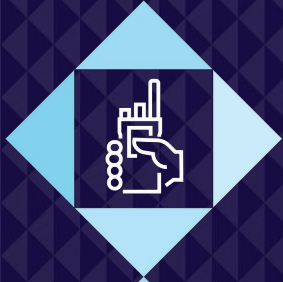
ROBUST ACCESSORY  
RETAINER

SIMPLIFIED USER  
EXPERIENCE

ACOUSTIC FEEDBACK  
SUPPRESSION

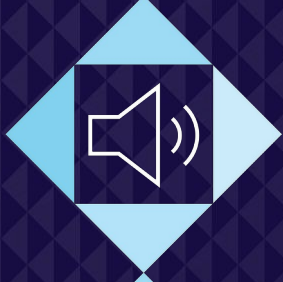


# KEY FEATURES



## SLEEK & TOUGH

- ALL-WEATHER CONFIDENCE
- SLIM & LIGHTWEIGHT
- FULL-SHIFT LIFE



## MAKE IT LOUD

- BLOCK OUT THE NOISE
- GO THE DISTANCE
- KEEP IT CLEAR



## WORK UNINTERRUPTED

- SIMPLIFIED USER EXPERIENCE
- FOOLPROOF "SWEET SPOT"
- SEAMLESS INTEGRATION





SLEEK &  
TOUGH



# ALL-WEATHER CONFIDENCE

TESTED TO MEET MILITARY STANDARDS  
BUILT TO SURVIVE THE WORKDAY'S BUMPS AND  
BRUISES

- Meets Mil-Std-810 requirements across 11 environmental conditions
- Endures rigorous ALT program, which simulates up to 5 years of field use
- IP55: Protected from dust particles and low-pressure water jets at any angle
- Ruggedized form factor for impact resilience
- Glove friendly



# SLIM & LIGHTWEIGHT



Weighs less than 300 grams when carried with a high-capacity battery.

The sleek design extends to the dust cover, which rotates to match the radio's contour



# WITH FULL-SHIFT LIFE



Your R2 won't wear down before shift change, and you'll know when you need to charge; press the PTT button to see a blinking red LED light, which signals a low charge state.

Slim, high-density battery operates down to -4 degrees Fahrenheit





MAKE IT  
LOUD



# BLOCK OUT THE NOISE



**MOTOTRBO R2 SHINES IN NOISY WORK ENVIRONMENTS; YOU WILL HEAR AND BE HEARD FROM ALL CORNERS OF THE WORKPLACE**

- SINC+ noise suppressor uses advanced algorithms to single out and eliminate disruptive background noise.
- Communicate with clarity to stay safe near a punch press, pneumatic drill, bulldozer and more.



# GO THE DISTANCE



## R2 HAS YOU COVERED, EVEN WHEN SPREAD OVER A LONG DISTANCE

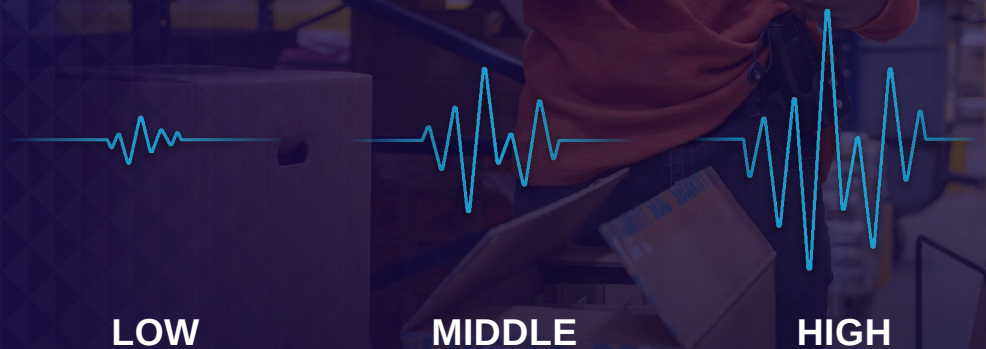
- Superior range, due to receiver sensitivity, high efficiency antennas and high interference immunity
- Experience clear audio, even across a large warehouse or field



# KEEP IT CLEAR

## CUSTOMIZE YOUR AUDIO TO SATISFY LISTENING PREFERENCE AND ENVIRONMENTAL CONDITIONS

- Select an audio profile to amplify low, middle or high frequencies to suit the listening environment
- Loud speaker and low distortion ensure your message comes across loud and clear





**WORK  
UNINTERRUPTED**



# SIMPLIFIED USER EXPERIENCE

## EASY-TO-PROGRAM FEATURES DESIGNED WITH THE USER IN MIND

- 2 programmable buttons available for a menu of features, including canned text messaging, home channel reminder, rental timer and more.

## CONTINUED SUPPORT TO MINIMIZE DOWNTIME

- Device name, model number and preview image clearly labeled on the box
- Scan the QR code on the back of the device to find the Get Started page and support materials
- Included services\* help you resolve issues with minimal downtime so you can keep your devices in the field longer

\*Essential Services provide three years of assurance through hardware repair coverage, technical support and software updates. Five year essential service available as an optional service.



# FOOLPROOF SWEET SPOT

## MANAGE YOUR DAY-TO-DAY WITHOUT SKIPPING A BEAT

- The curved, large push-to-talk (PTT) button is quick to locate and activate
- For further convenience, attach the remote speaker mic (RSM) to communicate without reaching for your belt



# SEAMLESS INTEGRATION

## EASY-TO-MANAGE MIGRATION

Worry less about costly upgrades.  
MOTOTRBO R2 is compatible with  
CP200d chargers and audio accessories.



MOTOTRBO

R2

THANK YOU



**MOTOROLA** SOLUTIONS