



MOTOTRBO

R7



# MOTOTRBO™ R7

## CUSTOMER PRESENTATION



MOTOROLA SOLUTIONS

# R7 SERIES

## THE NEXT GENERATION OF MOTOTRBO



PROGRAMMABLE  
LOUDNESS UP 107 PHONS

ADAPTIVE DUAL  
MICROPHONE NOISE  
SUPPRESSION  
(FRONT MICROPHONE)

2.4" 320 X 240  
PX. QVGA  
DISPLAY

BLUETOOTH 5.2

WI-FI 2.4/5.0 GHZ

WIDEBAND SPEAKER



LARGE, ERGONOMIC  
EMERGENCY BUTTON

ROBUST AND  
CORROSION-PROOF  
SIDE CONNECTOR

MODERN, INTUITIVE  
USER EXPERIENCE

AUTOMATIC ACOUSTIC  
FEEDBACK  
SUPPRESSION



# R7 SERIES

## THE NEXT GENERATION OF MOTOTRBO

DISINFECTANT AND  
DECONTAMINATION  
SUBSTANCE  
RESISTANT HOUSING <sup>1</sup>

SLEEK AND  
ERGONOMIC  
FORM FACTOR

SLIMMER,  
LIGHTER BATTERY

WPA3 WI-FI SECURITY  
PROTOCOL COMPLIANT

RUGGED TO MIL-STD 810

INTRINSICALLY SAFE  
OPTION (UL TIA-4950)

ADAPTIVE DUAL  
MICROPHONE NOISE  
SUPPRESSION  
(REAR MICROPHONE)

IP68/IP66

UP TO 28 HOURS OF  
BATTERY LIFE <sup>2</sup>

1. Please refer to the MOTOTRBO R7 user manual for a list of tested disinfectants and decontamination substances.

2. Typical battery life, 5/5/90 profile at maximum transmitter power with GNSS, Bluetooth, Wi-Fi and Option Board applications disabled. Actual observed runtimes may vary.



# KEY FEATURES



## LOUD AND CLEAR

- SHARP, CLEAR AUDIO
- BE HEARD ABOVE ALL ELSE
- CUSTOMIZABLE AUDIO EXPERIENCE



## FIT FOR BUSINESS

- BUILT TO OUTPERFORM
- CONNECTED WHEN IT COUNTS
- MINIMIZE DOWNTIME



## READY FOR TOMORROW

- BIG FEATURES, COMPACT DESIGN
- CRITICAL INFO AT FIRST GLANCE
- CONNECT AND COLLABORATE





**LOUD AND  
CLEAR**



# SHARP, CLEAR AUDIO



## HEAR AND BE HEARD MORE CLEARLY THAN EVER BEFORE, THE FIRST TIME

- Adaptive Dual Microphone Noise Suppression for game-changing noise cancellation
- Automatic Acoustic Feedback Suppression cancels out the feedback of other close-by radios
- Intelligent Audio monitors background noise and adjusts speaker volume automatically
- IMPRES™ technology ensures R7 works seamlessly with your Motorola accessories



# BE HEARD ABOVE ALL ELSE



**UNPRECEDENTED LOUDNESS,  
SO YOUR TEAM CAN HEAR IN  
ANY SITUATION**

- Re-engineered with a more powerful speaker
- 102 phons = 4x louder than a shouting conversation
- Programmable extra loud profile reaches up to 107 phons



# CUSTOMIZABLE AUDIO EXPERIENCE

ADAPT YOUR RADIO WITH ACCESSORIES THAT MAKE YOUR FLEET EASIER TO USE AND MORE CAPABLE – ESPECIALLY IN LOUD ENVIRONMENTS

- Quickly reach and use your radio with remote speaker microphones and other accessories
- Extra loud profile can be supported on a number of purpose-built accessories
- Dust and corrosion-resistant accessory port adds more robustness and longevity



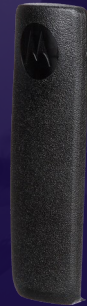
## AUDIO

Loud and clear, designed for comfort and wearability



## ENERGY

Maximize power for the longest shifts



## CARRY

Secure, easy access



## ANTENNAS

Designed for wearability



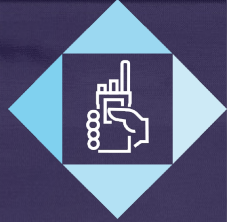
# FIT FOR BUSINESS



# BUILT TO **OUTPERFORM**

**TESTED TO MEET MILITARY STANDARDS.  
BUILT TO OUTPERFORM WHATEVER IS THROWN ITS WAY.**

- Intrinsically safe option for operation without the risk of ignition or fire
- IP68: Dust-tight, water immersion up to 2 meters for 2 hours
- IP66: Direct impact from highly pressurized water streams
- Ruggedized screen for impact resilience
- Housing resists disinfectants and decontamination substances\*



# CONNECTED WHEN IT COUNTS

CUSTOM VOICE COVERAGE FOR ANYWHERE YOU DO BUSINESS



PREDICTABLE COST  
STRUCTURE



SUPERIOR SIGNAL  
STRENGTH



CONTROL OF FEATURES  
AND DEVICES ON YOUR  
NETWORK



CAPACITY FOR AS  
MANY DEVICES AS  
YOUR TEAM NEEDS



CUSTOM SITE  
COVERAGE



CAPABILITIES TO ENSURE  
THAT YOUR TEAM IS ONLY  
A BUTTON'S PUSH AWAY



# MINIMIZE DOWNTIME



Compact form factor and exceptional battery life

Battery self-calibration eliminates hours of downtime



Over-the-air programming and updating via Wi-Fi keeps your radios up to date without taking them out of the field

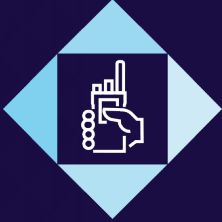


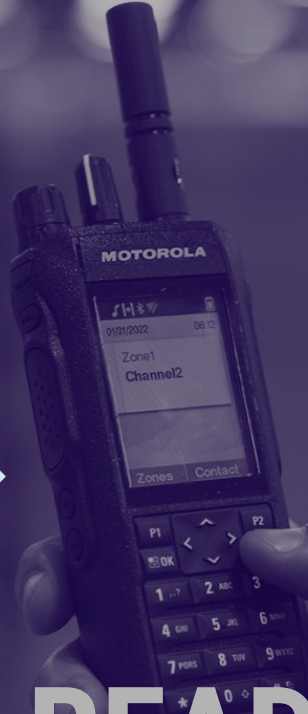
Built-in safeguards ensure your device is safe from unauthorized access and interception



Included services\* help you resolve issues with minimal downtime so you can keep your devices in the field longer, with five years of included coverage

\*Essential Services provide five years of assurance through hardware repair coverage, technical support, software updates and premium features. Five-year accidental damage coverage is available as an add-on service.





**READY FOR  
TOMORROW**



# BIG FEATURES, COMPACT DESIGN

**MORE FEATURES THAN EVER BEFORE,  
IN A SLEEK AND ERGONOMIC FORM FACTOR**

- 2.4 in. 320 x 240 px. QVGA display for easy navigation
- Front and back microphones for advanced noise cancelling
- Powerful forward-facing speaker delivers loud and clear audio
- 2.4 GHz and 5 GHz Wi-Fi and Bluetooth 5.2 for simple connectivity
- Slim, long-lasting battery for more talk time
- Large emergency button with optimized ergonomic design



# CRITICAL INFO AT FIRST GLANCE

## FEWER CLICKS, LESS SCROLLING AND NAVIGATING

- Large, updated display for an intuitive user experience and efficient navigation
- Uncomplicated user experience minimizes learning curve
- Detailed notifications on the home screen
- Keep your team informed and productive



# CONNECT AND COLLABORATE

## NOT INUNDATE

- Streamline safety, security, and connectivity into a single workflow
- Collaborate with video security systems, sensors and more
- Keep your team at peak productivity and efficiency
- Scalable connectivity with Motorola ecosystem



MOTOTRBO  
R7

THANK YOU

